

MATTHEW JAMES

Residential Sales • Lettings • Management



York Rise, Dartmouth Park, NW5 1DT

Asking Price £239,950

A good sized studio flat on the ground floor of a purpose built block requiring some updating. The property is located in enviable Dartmouth Park and within close walking distance of Parliament Hill Fields and its large selection of amenities including a running track, lido, tennis courts and cafes all of which lead onto the wide open spaces of Hampstead Heath. Offered Chain Free. New 250 Year Lease. Mixed Tenure Block.

Ground Floor Entrance

Hallway

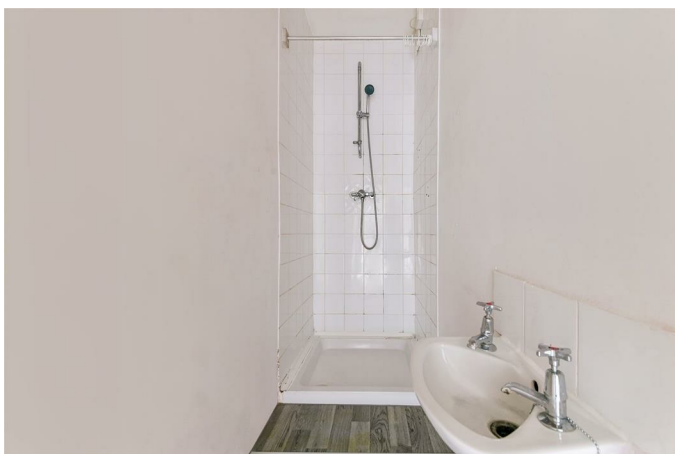
Studio Room



Kitchen



Shower Room



W.C.



Additional Information

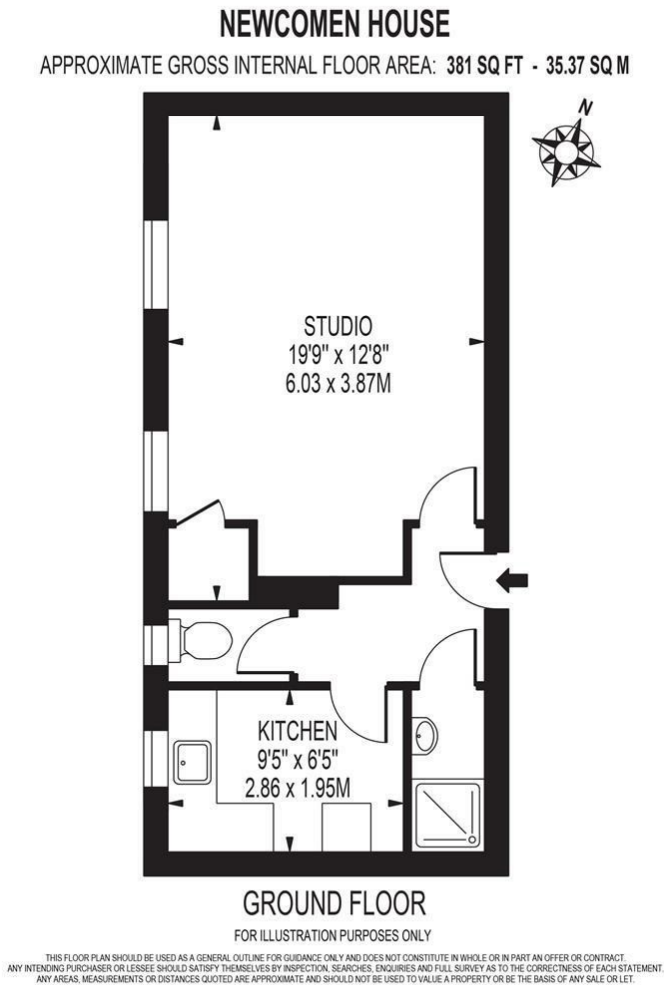
New 250 Year Lease

Service Charge £1334.81 Per Annum

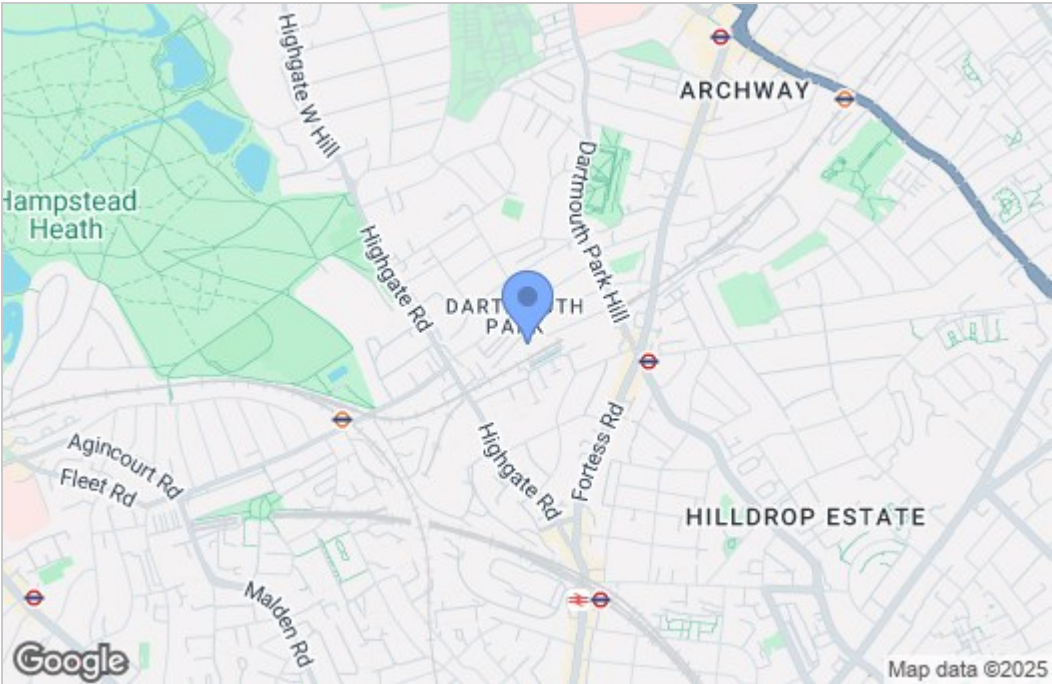
Ground Rent - Zero

Camden Council Tax Band B

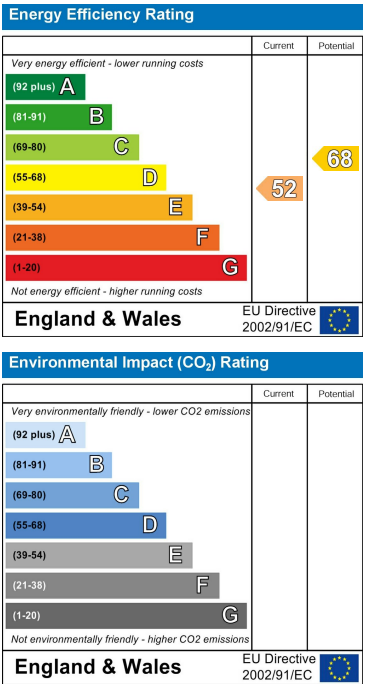
Floor Plan



Area Map



Energy Efficiency Graph



These particulars, whilst believed to be accurate are set out as a general outline only for guidance and do not constitute any part of an offer or contract. Intending purchasers should not rely on them as statements of representation of fact, but must satisfy themselves by inspection or otherwise as to their accuracy. No person in this firms employment has the authority to make or give any representation or warranty in respect of the property.